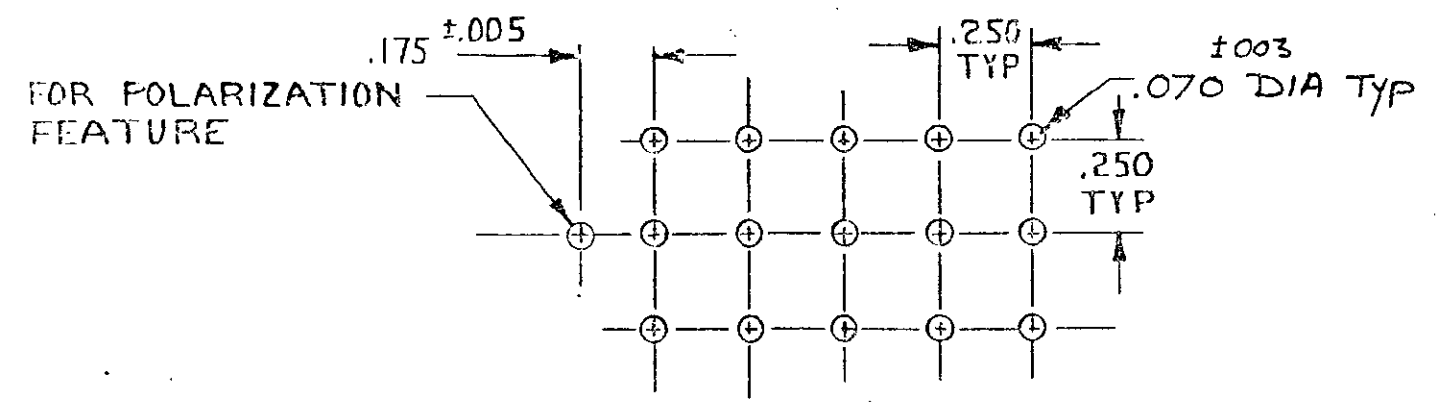
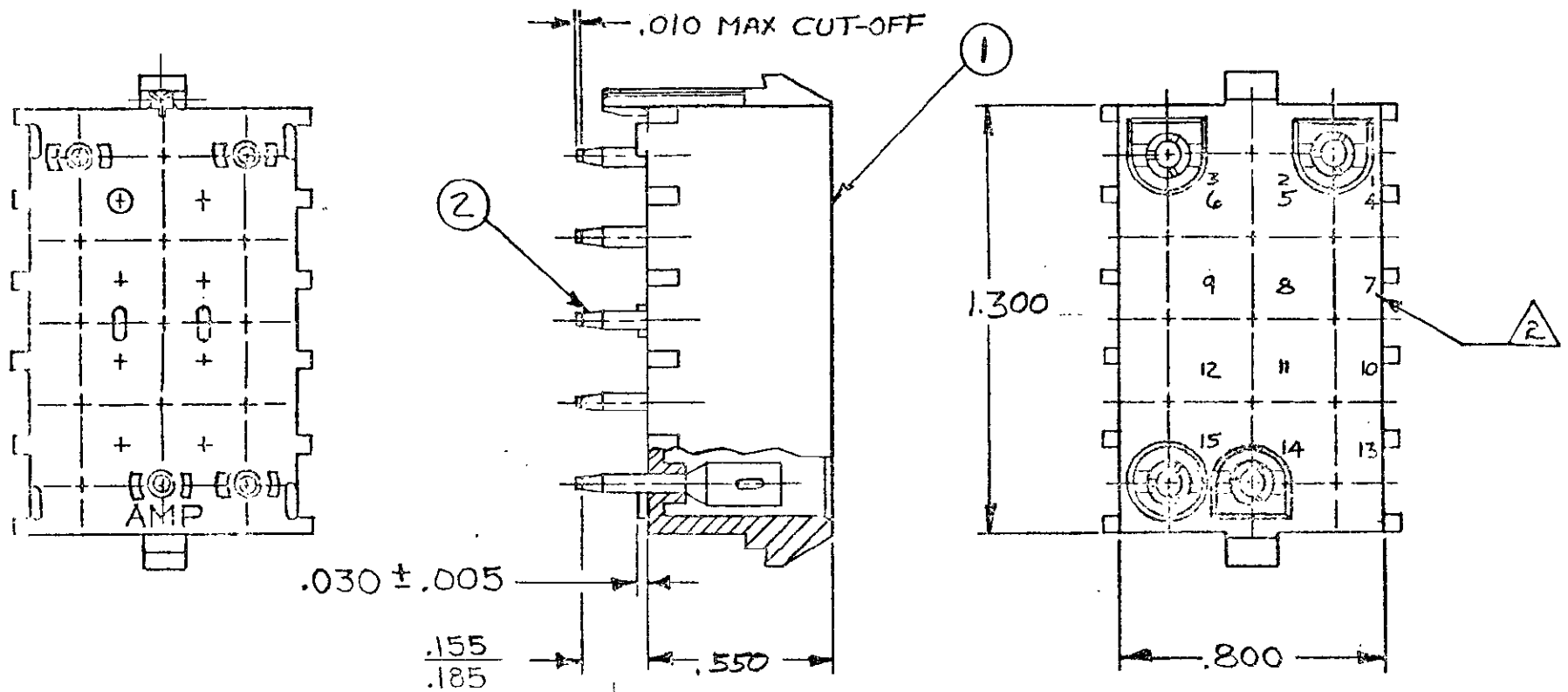


THIS DRAWING IS UNPUBLISHED. RELEASED FOR PUBLICATION 19
 © COPYRIGHT 19 BY AMP INCORPORATED, HARRISBURG, PA. ALL INTERNATIONAL RIGHTS RESERVED. AMP PRODUCTS MAY BE COVERED BY U.S. AND FOREIGN PATENTS AND/OR PATENTS PENDING.

| REVISIONS | | | | | |
|-----------|------|----------------|--------------------------------|---------|-------------|
| P | ZONE | LTR | DESCRIPTION | DATE | APPROVED |
| ✓ | | O | RELEASED NEW DRAWING, TT 83-17 | 3/21/83 | DA5/DH |
| ✓ | | A | REVISED PER ECN M-7383 | 9-12-83 | S.D.W. RS |
| ✓ | | B | REVISED PER ECN AG 214 | 1-27-84 | MC RS |
| ✓ | | B ₁ | RESTORATION | 2/28/85 | P/S/N.J. RS |
| ✓ | | C | REVISE PER CM-1511 | 2-10-83 | P/C RS |
| ✓ | | D | REV PER ECN 0730-3928-92 | 1-8-93 | N-6 RS |
| ✓ | | E | REV PER EC 0730-0111-95 | 8-29-95 | JH RS |



RECOMMENDED LAYOUT FOR .062 THICK P.C. BOARD

- PARTS COMPLY WITH AMP SOLDERABILITY SPEC 109-11-3.
- CIRCUIT IDENTIFICATION CHARACTERS ARE ADJACENT TO THE INDICATED CAVITIES, BUT LOCATION AND ORIENTATION MAY DIFFER FROM PRINT.

| NO. PER ASSY | DESCRIPTION | MATERIAL & FINISH | ITEM No. | PART NO |
|--------------|-------------|-----------------------|----------|----------|
| 15 | SOCKET | PH BRZ, PRE-TIN | 2 | 643429-1 |
| 1 | HOUSING | NYLON, 94V-2, NATURAL | 1 | |

| | | | | |
|--|-------------|------------|--|---------|
| UNLESS OTHERWISE SPECIFIED DIMENSIONS ARE IN INCHES. TOLERANCES ON: DECIMALS ±.015 ANGLES * | CONTRACT NO | | AMP INCORPORATED Harrisburg, Pa. | |
| | DR | 3-24-83 | | |
| | CHKD | 4/8/83 | NAME | |
| | APPD | 4/8/83 | HEADER ASSEMBLY, SOCKET, POLARIZED, UNIVERSAL MATE-N-LOK™, 15 CIRCUIT | |
| MATERIAL | SEE TABLE | DSGN APPD | SIZE | FSCM NO |
| FINISH | SEE TABLE | OTHER APPD | B | 00779 |
| | | DRAWING NO | | 643429 |
| | | SCALE | 7:1 | SHEET |